



## Design Solutions

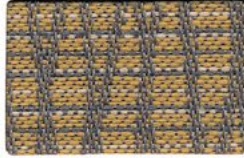
<b><u>Pattern</u></b>	<b><u>Grade</u></b>
Bryant Park	1
Clean Slate	3
Continuum	3
Nova	3
Sideline	3
Thicket	2

Interactive Samples Click on the image to order a memo sample.

THICKET



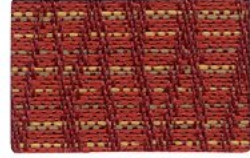
6369 Quicksilver



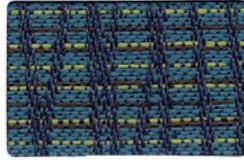
6370 Silver and Gold



6368 Chutney



6372 Sour Cherry



6367 Bahamas



6371 Blueprint



6365 Black Tea

BRYANT PARK



6563 Night Shadow



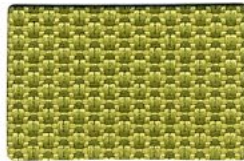
6555 Pumice



6556 Curry



6552 Medoc



6561 Crocodile



6551 Marigold



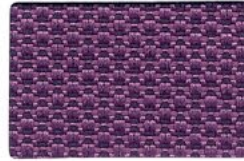
6550 Burgundy



6554 Dusk



6559 Hemlock



6562 Violet



6557 Raspberry



6558 Saxon Blue



6553 Nile



6560 Gunmetal



6564 Chocolate

CONTINUUM



62809 Mystic



62806 Cashmere



62807 Finch



62812 Vermillion



62811 Dragon



62813 Mink



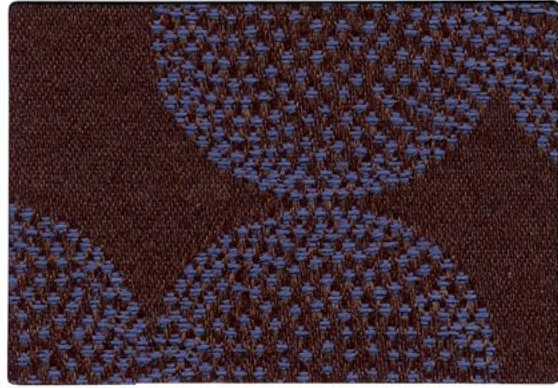
62805 Pecan

Interactive Samples Click on the image to order a memo sample.

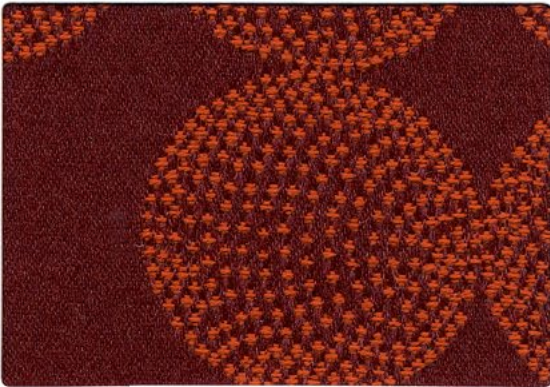
NOVA



62786 Fireball



62787 Earth



62784 Red Hot



62780 Spotlight

CLEAN SLATE  
with Enhanced Ink Resistance



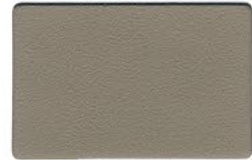
CLN 27 Shark



CLN 40 Chili



CLN 20 Cobalt



CLN 22 Stone



CLN 48 Onyx



CLN 44 Maroon

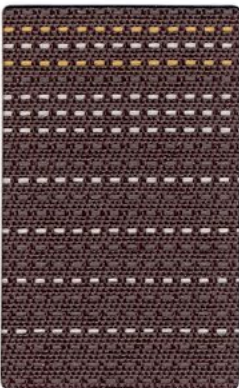


CLN 39 Indigo

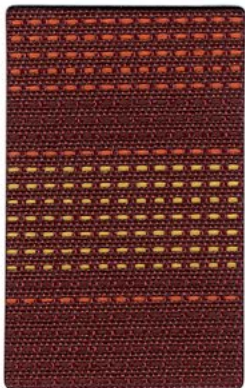


CLN 47 Espresso

SIDELINE



63350 Shady Lane



63348 Fiesta



63352 Malibu



63351 Safari

**Specifications and Technical Information**

Pattern	Content	Resistance (Wyzenbeek)	Soil/Stain Protection	Cleaning Code
<i>Bryant Park</i>	100% Polyester	100,000 dr	Enhanced Soil & Stain Protection	W
<i>Clean Slate</i>	Vinyl with Polyester Backing	100,000 dr	Advanced Soil & Stain Protection with Ink Resistance	W-S
<i>Continuum</i>	47% Post-Industrial Recycled Polyester, 33% Post-Consumer Recycled Polyester, 20% Polyester	60,000 dr	Enhanced Soil & Stain Protection	W-S
<i>Nova</i>	65% Post-Consumer Recycled Polyester, 35% Post-Industrial Recycled Polyester	60,000 dr	Enhanced Soil & Stain Protection	W-S
<i>Sideline</i>	100% Post-Industrial Recycled Polyester	100,000 dr	Enhanced Soil & Stain Protection	W-S
<i>Thicket</i>	60% Olefin, 40% Polyester	70,000 dr	Enhanced Soil & Stain Protection	W-S

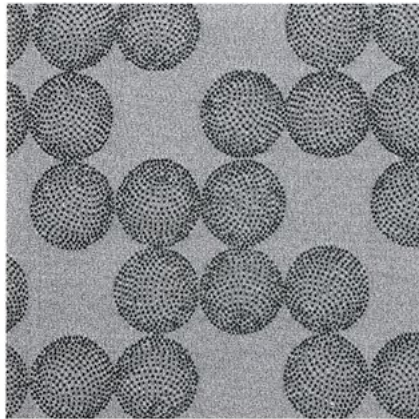
All patterns are 54" wide. Dye lots may vary slightly from samples shown. These patterns may contribute to compliance with CA Tech Bulletin 133 when used in conjunction with other suitable components.

These patterns meet or exceed ACT performance standards for upholstery:     

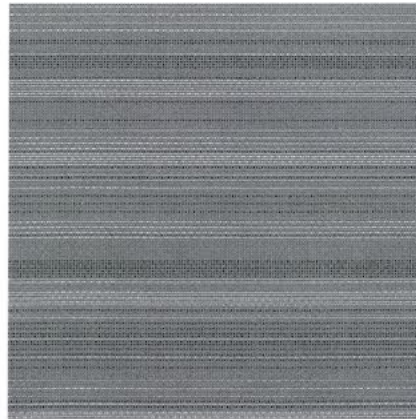
**Flammability\*:**

**All patterns in this collection pass California Bulletin 117 - 2013, Sec. 1, UFAC Class 1, and NFPA 260 Class 1.**

\*This term and any corresponding data refer to typical performance in the tests indicated and should not be construed to imply the behavior of this or any other material under actual fire conditions.



**Nova**



**Sideline**

Visit the **Stinson See/Sample/Spec** sample room at [www.rtlondon.com](http://www.rtlondon.com). View all Stinson patterns with their respective RT London grades and order memo samples directly from the site.



1642 Broadway NW  
 Grand Rapids, MI 49504  
 ph 877.613.2012  
 fx 616.364.1131

[rtlondon.com](http://rtlondon.com)



C.F. Stinson, Inc.  
 2849 Product Drive  
 Rochester Hills, MI 48309

W [cfstinson.com](http://cfstinson.com)  
 P 800 841 6279  
 F 248 299 3884