



## Torch

Torch tables combine metal bases with wood or plastic laminate tops to provide a tremendous variety of aesthetic options. The base is four metal posts banded at the top with welded tubing.



### specifications

- Four-legged, round, occasional table series.
- Legs are 1¼" high-quality, plating-grade, steel tube welded to a circular, steel support frame and trim rail.
- Multiple top materials, heights, sizes and edge treatments.
- Oven-baked epoxy/polyester finish on metal.

### powder coat finish



Maya



Inca



Aztec



Bronze Silverado



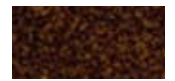
Copper



Earth with Clearcoat



Weathered Brick with Clearcoat



Weathered Brown with Clearcoat



Ultra Bronze



Mocha Metallic



Speckled Pearl with Clearcoat



Stucco with Clearcoat



Khaki



Sun Gold with Clearcoat



Garden Sage with Clearcoat



Dark Green Wrinkle



Sparkle Silver with Clearcoat



Satin Nickel with Clearcoat



Silver Cast



Mirror Silver with Clearcoat



Stack Black



Ink Black



Gloss Black



Black Wrinkle



Graphite



Imperial Blue



Blue Wrinkle



Blue Ice Metallic



Gloss White



Ruby Red



Burgundy



Clearcoat Gloss Matte finish also available.

#### Color Disclaimer

Please order actual material samples for specifying purposes. Color accuracy is not guaranteed with these images.