

## Lotus Approved Textiles

Thank you for your interest in specifying Lotus. We believe the specification process should be as easy and streamlined as possible, all while achieving the highest possible level of quality. Our experience has shown us that due to textile composition differences not all fabrics perform well on all products and, as such, our designers have chosen the most ideal fabrics for use on Lotus referred to as Lotus Approved Textiles.

### WRINKLE, PUDDLE, OR PUCKER

Pulling design inspiration from a formed lounge chair and plush bean bag, Lotus's softness and looser fabric fit will naturally cause wrinkles over time. We are embracing these wrinkles as a design feature of Lotus. We believe the Lotus Approved Textiles selections will provide the best results both initially and over time to accentuate the product's effortless look and feel.

We know there may be interest in using fabrics outside of the Lotus Approved Textiles and are happy to test fabrics as requested. We want to make sure the RT London products you specify look their absolute best but would like to emphasize that non-Lotus Approved Textiles may exhibit excessive wrinkling or may puddle or pucker in various areas of the product.

Please contact [designservices@rtlondon.com](mailto:designservices@rtlondon.com) with questions.

## Lotus Approved Textiles

---

Culp Kedar  
Culp Ridgecrest Culp  
Montgomery

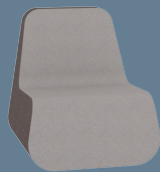
Culp Dorset  
Culp Connelly  
Culp Dillon

Mayer Fedora  
Mayer Caressa  
Mayer Fleck  
Mayer Ritzi

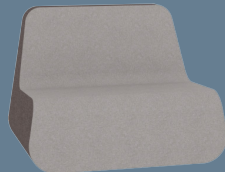
Camira Blazer

## Statement of Line

---



35d | 31w | 35h



35d | 43w | 35h



23d | 31w | 16h



31d | 27w | 33h



19d | 27w | 16h

## handle options

---



Black



Brown



Grey



**Caterham**  
CUZ4A



**Fairfield**  
CUZ47



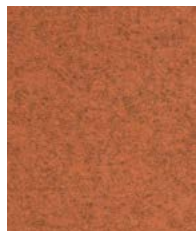
**Dartmouth**  
CUZ2Q



**Derby**  
CUZ4Q



**Edgehill**  
CUZ90



**Malvern**  
CUZ3L



**Ackworth**  
CUZ3P



**Sidcot**  
CUZ3V



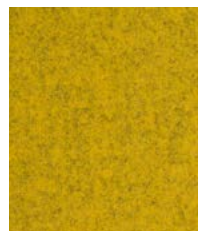
**Moreton**  
CUZ3W



**Chichester**  
CUZ4C



**Falmouth**  
CUZ4M



**Lucton**  
CUZ3M



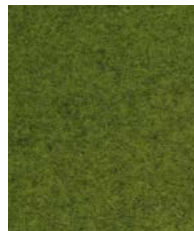
**Grantham**  
CUZ4E



**Cardiff**  
CUZ1N



**Stowe**  
CUZ3R



**Camphill**  
CUZ1K



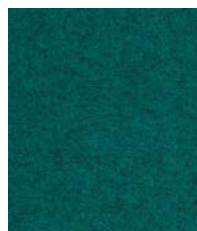
**Moray**  
CUZ4K



**Glenalmond**  
CUZ62



**Oxford**  
CUZ09



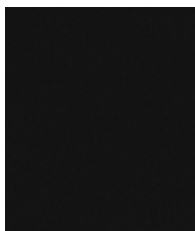
**Bodmin**  
CUZ3F



**Norland**  
CUZ4J



**Plymouth**  
CUZ1R



**Napier**  
CUZ08



**Silcoates**  
CUZ30



**Trevelyan**  
CUZ31



**Stonebridge**  
CUZ4W



**Silverdale**  
CUZ28

Visit [www.camirafabrics.com](http://www.camirafabrics.com) to view the full range of colors available in each pattern.  
Photographic fabric scans are not color accurate. Always request actual fabric samples before ordering.

---

## Blazer

Blazer is a classic pure new wool upholstery fabric with a billiard cloth felted finish. The fabric is made from premium New Zealand lambswool and benefits from complete integrity right from individual sheep farms to the finished fabric.

**Made by Camira.**

---

## Technical information



---

### Composition

100% Pure New Wool. Non metallic dyestuffs

---

### Environmental

Rapidly renewable and compostable

---

### Width

54 inches minimum

---

### Abrasion Resistance\*

ASTM D4157 Wyzenbeek method

Heavy Duty Upholstery independently certified to  $\geq 75,000$  double rubs

Covered by a full and comprehensive 10 year guarantee (full details available)

---

### Flammability

California Technical Bulletin 117 - 2013

NFPA 260 + UFAC Class 1

BS 7176 Low Hazard

ASTM E84 Class 1 or A (Adhered)

ASTM E84 Class 1 or A (Un-adhered)

*Note: Flammability performance is dependent on components used.*

---

### Cleaning code

W/S

Clean with water-based cleaning agent or solvent: Depending on the stain, you can use a dry-cleaning solvent, the foam of a mild detergent, or upholstery shampoo.

\*Camira recognizes that the number of Wyzenbeek double rubs does not reflect the actual wear performance of fabrics. We're so confident in the durability of our products that we provide a robust 10 year guarantee (full details available). This product is externally certified, details of which are on our website and available from our customer services team.

Batch to batch variations in shade may occur within commercial tolerances. We reserve the right to alter technical specifications without notice. The Unregistered Design Rights and the Copyright in all designs are the exclusive property of Camira Fabrics Limited.



## camira

For additional information or sample requests visit:

[www.camirafabrics.com](http://www.camirafabrics.com)

Samples can also be requested by email at:

[memos@camirafabrics.com](mailto:memos@camirafabrics.com)

## FEDORA



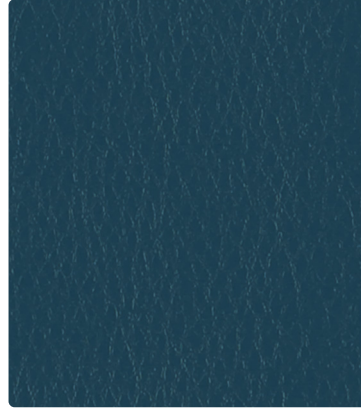
621-014 **Indigo**

## FLECK



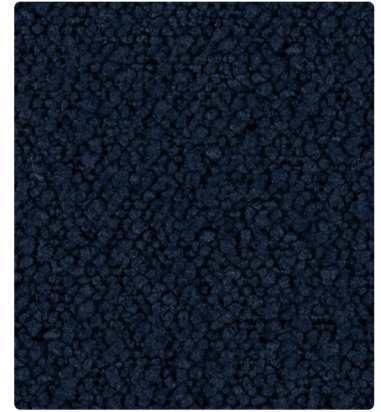
474-024 **Tidal**

## CARESSA



CA-114 **Pacific**

## RITZI



401-004 **Naval**



621-036  
**Dapper**



621-017  
**Fawn**



474-007  
**Tundra**



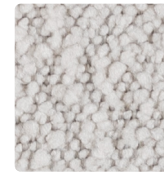
474-027  
**Heron**



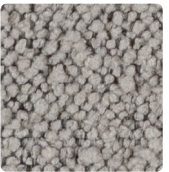
CA-017  
**Pebble**



CA-030  
**Taupe**



401-007  
**Cloud**



401-027  
**Lunar**



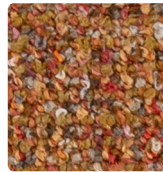
621-002  
**Topaz**



621-019  
**Tangelo**



474-002  
**Honey**



474-009  
**Maple**



621-032  
**Lemon**



621-039  
**Tangerine**



401-002  
**Amber**



401-019  
**Turmeric**



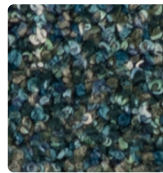
621-013  
**Citron**



621-003  
**Cactus**



474-003  
**Mallard**



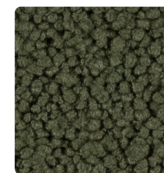
474-013  
**Raintree**



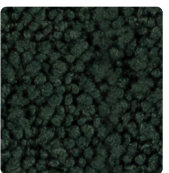
621-103  
**Lime**



621-113  
**Jade**



401-023  
**Forest**



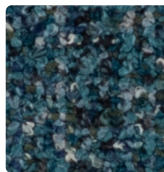
401-033  
**Emerald**



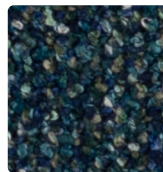
621-053  
**Aegean**



621-004  
**Midnight**



474-014  
**Baltic**



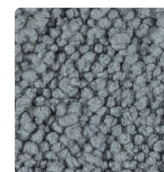
474-034  
**Lagoon**



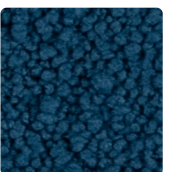
CA-094  
**Calypso**



CA-064  
**Cerulean**



401-043  
**Opal**



401-014  
**Ocean**



621-001  
**Ruby**



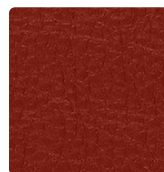
621-008  
**Plum**



474-001  
**Flare**



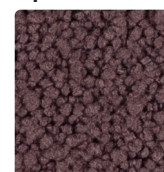
474-008  
**Wildberry**



621-021  
**Red Pepper**



621-005  
**Aubergine**



401-005  
**Mauve**



401-001  
**Scarlet**



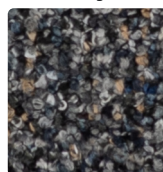
621-016  
**Charcoal**



621-006  
**Bitumen**



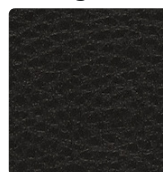
474-026  
**Carbon**



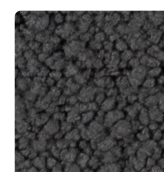
474-036  
**Peppercorn**



CA-026  
**Granite**



CA-006  
**Black**



401-016  
**Slate**



401-006  
**Peppercorn**

# TECHNICAL INFORMATION

Pattern 54"	Content and Backing	Certifications	Weight/ Linear Yd.	Pattern Repeat	Finish	Abrasion Wyzenbeek	Light- Fastness	Flammability	Cleaning Code
CARESSA	80% Vinyl - Phthalate Free face, 20% Polyester backing	GREENGUARD Gold	29 oz.	None	Soil & Stain Resistant Top Coat with Ink Resistant Technology	650,000^ Double Rubs	1000 hours	Cal. 117-2013 NFPA 260/UFAC Class 1 FMVSS 302	BC, CFC
FEDORA <i>Directional Multi-use</i> <sup>+</sup>	100% Polyester Backing: Polyester	GREENGUARD Gold	17.2 oz.	None	Stain Repellent - PFAS Free	100,000^ Double Rubs	40 hours	Cal. 117-2013 NFPA 260/UFAC Class 1 ASTM E84 (Unadhered) Class 1 or A	W
FLECK	94% Polyester, 4% TPU, 2% Silicone Backing: Fluid Barrier (Supreen) Polyurethane	GREENGUARD Gold	19.7 oz.	None	Supreen (Silicone) PFAS Free	100,000^ Double Rubs	40 hours	Cal. 117-2013 NFPA 260/UFAC Class 1	WS, BC
RITZI	94% Polyester, 4% TPU, 2% Silicone Backing: Fluid Barrier (Supreen) Polyurethane	GREENGUARD Gold	18 oz.	None	Supreen (Silicone) PFAS Free	100,000^ Double Rubs	40 hours	Cal. 117-2013 NFPA 260/UFAC Class 1	WS, BC

## REDUCED ENVIRONMENTAL IMPACT

These products are GREENGUARD Gold Certified for low chemical and particle emissions to UL standard UL 2818 and may contribute to LEED certification.

No FR Additives    No Antimicrobial/Antibacterial Additives    PFAS Free

## CARE AND CLEANING INFORMATION

W: Water-Based Cleaner

WS: Water/Solvent Cleaner

CFC: Coated Fabrics Cleaning – Refer to Mayer website for complete cleaning info.

BC: Bleach Cleanable – 1 part bleach, 9 parts water = 10% bleach, 90% water solution. **Do not clean/disinfect fabric for longer than 10 minutes using the 10% bleach solution. Always rinse promptly with clean water after applying the bleach solution. Failure to do so will void any and all warranties.**

## DYE TRANSFER DISCLAIMER

Certain clothing and accessory dyes (such as those used on denim jeans) may migrate to lighter colors. This phenomenon is increased by humidity and temperature and is irreversible. Mayer Fabrics will not assume responsibility for dye transfer caused by external contaminants. Please check compatibility when using this product in combination with painted or varnished surfaces.

## ADDITIONAL INFORMATION

^Abrasion test results exceeding ACT Performance Guidelines are not an indicator of product lifespan. Multiple factors affect fabric durability and appearance retention.

+A multi-use fabric that can be used for upholstery, panels, wrapped walls, and acoustic.

Warranty: Please refer to the Mayer website for warranty information by pattern.

Custom Colors: All patterns can be custom colored. Minimum yardage applies.

Digital Swatch Card Color Matching: Due to color variations on different monitors and color printers, actual swatch colors may vary slightly. Please request a memo sample from Mayer Fabrics to ensure proper color representation.

Complete and current product information available at [mayerfabrics.com](http://mayerfabrics.com).


+**Fedora**: A multi-purpose fabric that can be used for upholstery, panels, & wrapped walls



These fabrics meet or exceed these ACT performance guidelines.  
\*Certification Marks owned by ACT®

©2026  
RTLLFCD MF0426

## FEDORA

 This is 100% polyester fabric included in the Underwriter's Laboratory Fabric Recognition Program. Additional testing of the U.L. recognized component is not required on approved panels from participating manufacturers.



# MAYER FABRICS

## Ridgecrest



Putty



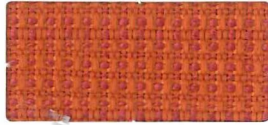
Beach



Tide Pool



Sterling



Bittersweet



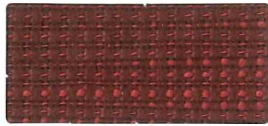
Meadow



Mink



Chocolate



Ruby



Midnight



Ink

## Montgomery



Mushroom



Red Pepper



Lime



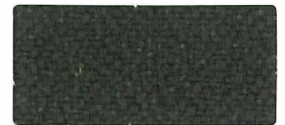
Sterling



Melon



Bermuda



Iron



Cocoa



Grape



Midnight



Black

## Kedar



Taupe



Poppy



Espresso



Light Grey



Burgundy



Indigo



Iron

## Fabric Specifications and Technical Data

	Kedar	Montgomery	Ridgecrest
Content;	100% Polyester	100% Polyester	100% Polyester
Backing;	Synthetic latex blend	Synthetic latex blend	Synthetic latex blend
Width;	54"	54"	54"
Weight;	15.6 ozs.	10.72 ozs.	12.96 ozs.
Abrasion;	60,000	100,000	100,000
Flammability;	CA 117-2013	CA 117-2013	CA 117-2013
Passes;	UFAC Class I NFPA 260 Class I	UFAC Class I NFPA 260 Class I	UFAC Class I NFPA 260 Class I
Lightfastness;	Class 4/ 40 Hours	Class 4/ 40 Hours	Class 4/ 40 Hours
Colorfastness;	Wet: Class 3 Dry: Class 4	Wet: Class 4 Dry: Class 4	Wet: Class 4 Dry: Class 5
Pilling Resistance;	Class 4	Class 4	Class 4
Breaking Strength;	Warp: 80 lbs. Weft: 74 lbs.	Warp: 75 lbs. Weft: 69 lbs.	Warp: 80 lbs. Weft: 68 lbs.
Seam Slippage;	Warp: 86 lbs. Weft: 74 lbs.	Warp: 35 lbs. Weft: 35 lbs.	Warp: 84 lbs. Weft: 72 lbs.
Cleaning Code;	W	W	W
Country of Origin;	Columbia, SA	China	USA

For samples or further information, please contact::

Culp, Inc.  
 Contract Fabrics  
 1823 Eastchester Drive  
 High Point, NC 27265  
 Phone: (336)-889-5161  
 Fax: (336)-889-7848  
[www.culpcontract.com](http://www.culpcontract.com)

**CULP**  
 CONTRACT

2-5-2015

Dorset



Flax



Camel



Copper



Cayenne



Cherry



Mulberry



Taupe



Balsa



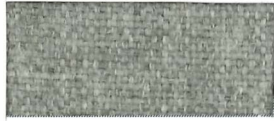
Soda



Charcoal



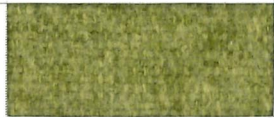
Silver



Platinum



Ash



Avocado



Ocean Blue



Smoke Blue



Denim



Blueberry



Black Indigo



Black

Connelly



Parakeet



Dove



Wren



Owl



Chick



Peacock



Parakeet



Bluebird



Parrot



Bluejay



Hawk



Crow



Firefinch

## Connelly

Content:	100% Polyester
Backing:	Synthetic Latex Blend
Finish:	i-clean™, a high performance stain and moisture repellent, based on Nano technology.
Weight:	16.8 oz. per linear yard
Width:	54"
Abrasion:	Heavy Duty – 95,000 Cycles (Wyzenbeek – Cotton Duck Abradant) (ASTM D4157)
Light Fastness:	Class 4/40 hrs. min. (AATCC16A)
Color Fastness:	Class 4 (ASTM D3597, AATCC8) Wet Class 4 (ASTM D3597, AATCC8) Dry
Physical Properties:	Class 4 (ASTM D3511) Brush Pill 213 lbs. warp, 162 lbs. weft (ASTM D5034) Breaking Strength 106 lbs. warp, 100 lbs. weft (ASTM D4034) Seam Slippage
Passes:	California Tech. Bulletin #117-2013 UFAC Class I NFPA 260 Class I
Cleanability:	W – Water based cleaners may be used.  This fabric is made in China.

## Dorset

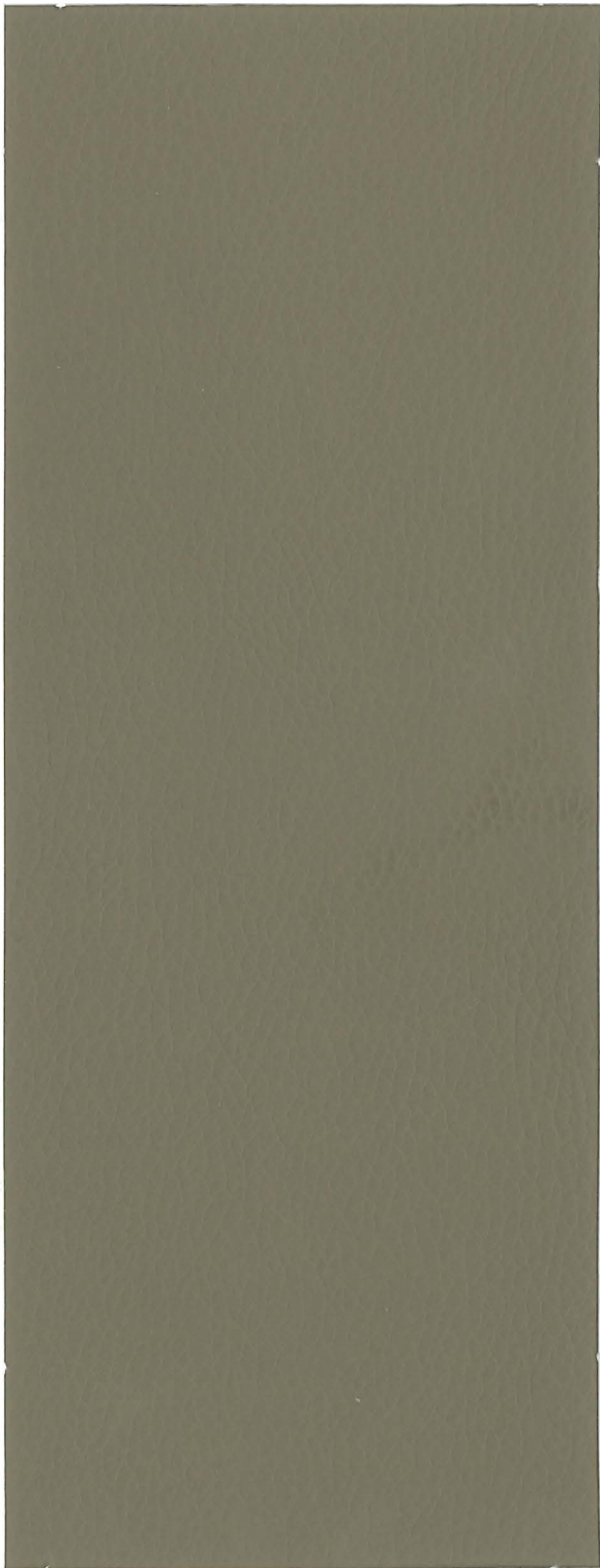
Content:	100% Polyester
Backing:	100% Polyester
Finish:	i-clean™, a high performance stain and moisture repellent, based on Nano technology.
Weight:	17.28 oz. per linear yard
Width:	54"
Abrasion:	Heavy Duty – 55,000 Cycles (Wyzenbeek – Cotton Duck Abradant) (ASTM D4157)
Light Fastness:	Class 4/40 hrs. min. (AATCC16A)
Color Fastness:	Class 3 (ASTM D3597, AATCC8) Wet Class 4 (ASTM D3597, AATCC8) Dry
Physical Properties:	Class 4 (ASTM D3511) Brush Pill 97 lbs. warp, 94 lbs. weft (ASTM D5034) Breaking Strength 41 lbs. warp, 38 lbs. weft (ASTM D4034) Seam Slippage
Passes:	California Tech. Bulletin #117-2013 UFAC Class I NFPA 260 Class I
Cleanability:	W – Water based cleaners may be used.  This fabric is made in China.

**CULP**  
CONTRACT

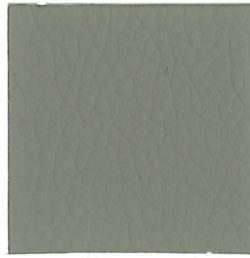
For samples or further information, please contact:  
Culp, Inc.  
Contract Fabrics  
1823 Eastchester Drive  
High Point, NC 27265  
Phone: (336) 889-5161 • Fax: (336) 899-7848  
www.culpcontract.com

5-01-2018

# Dillon



Balsa



Quarry



Steel



Stratus



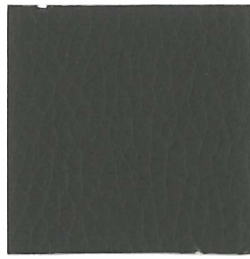
Lucid



Tusk



Storm



Graphite



Iron



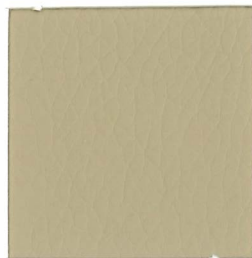
Java



Black



Straw



Buff



Sandy



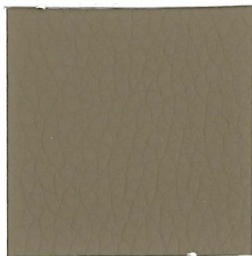
Snow



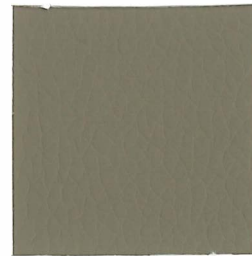
Fiesta



Luggage



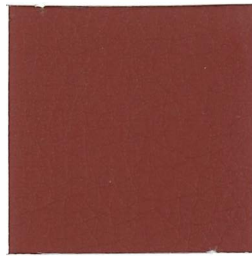
Safari



Balsa



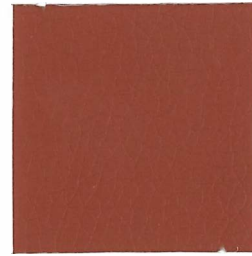
Bordeaux



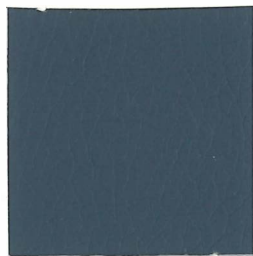
Cordovan



Lipstick



Chili



Williamsburg



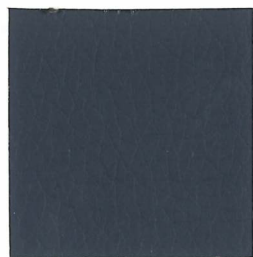
Baltic



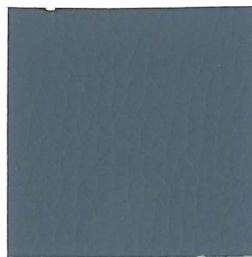
Sage



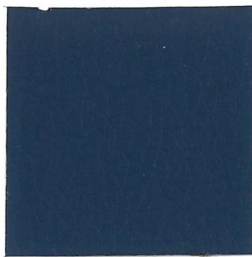
Apple Green



Thunder



Nimbus



Ocean



Grape

## Dillon

Content:	100% Polyurethane
Backing:	70% Polyester, 30% Cotton
Finish:	Antimicrobial - silver based ion technology
Weight:	20.3 oz. per linear yard
Width:	54"
Environmental Benefit:	PVC Free Phthalate - compliant CPSC sec. 108 Lead - compliant CPSC sec. 101
Abrasion:	Heavy Duty - Exceeds 200,000 Cycles (Wyzenbeek - #8 Cotton Duck Abradant) (ASTM D4157)
Light Fastness:	Class 4/200 hrs. min. (AATCC16A)
Color Fastness:	Class 5 (ASTM D3597, AATCC 8) Wet Class 5 (ASTM D3597, AATCC 8) Dry
Physical Properties:	Class 5 (ASTM D3511) Brush Pill 130 lbs. warp, 120 lbs. weft (ASTM D5034) Breaking Strength 61 lbs. warp, 81 lbs. weft (ASTM D4034) Seam Slippage Pass (CFFA 6a) Cold Crack Pass (ISO 1419) 5 weeks
Passes:	California Tech. Bulletin #117-2013 UFAC Class I NFPA 260 Class I MVSS 302 Pass IMO A. 652(16) 8.2
Cleanability:	WS - Both water and solvent based solutions.

This fabric is made in China.

For samples or further information, please contact:

Culp, Inc.

Contract Fabrics

1823 Eastchester Drive

High Point, NC 27265

Phone: (336)-889-5161

Fax: (336)-899-7848

[www.culpcontract.com](http://www.culpcontract.com)

**CULP**  
CONTRACT

5-21-2018