



VINYLCOORDINATES



MAYERFABRICS

MINGLE



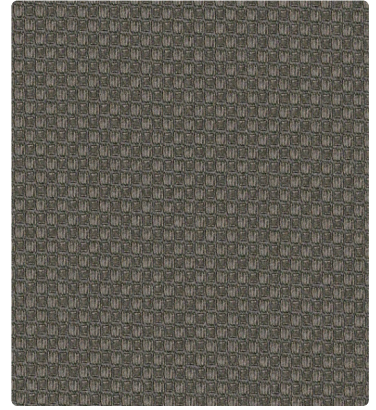
MG-026
Cloud

FLORENTINO



FT-026
Dove

ETCH



EH-010
Shiitake



MG-002
Straw



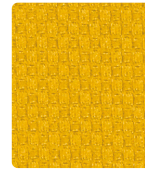
MG-019
Persimmon



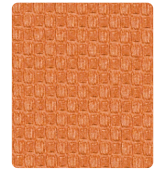
FT-032
Jonquil



FT-029
Mango



EH-002
Marigold



EH-009
Mango



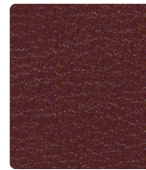
MG-009
Melon



MG-001
Rouge



FT-011
Lipstick



FT-009
Chili



EH-001
Flame



EH-005
Grape



MG-023
Turquoise



MG-004
Indigo



FT-044
Turquoise



FT-004
Sapphire



EH-014
Denim



EH-004
Sapphire



MG-003
Aloe



MG-013
Aqua



FT-033
Willow



FT-043
Basil



EH-003
Lime



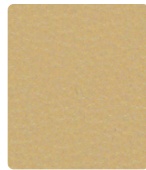
EH-034
Crystal



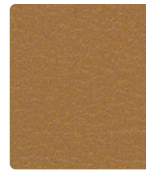
MG-027
Hemp



MG-030
Taupe



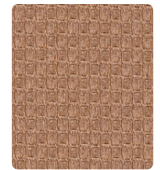
FT-027
Khaki



FT-022
Caramel



EH-007
Sand



EH-019
Penny



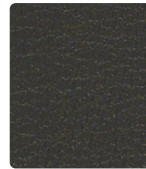
MG-036
Rain



MG-016
Sterling



FT-020
Bark



FT-016
Slate



EH-036
Nickel



EH-016
Charcoal

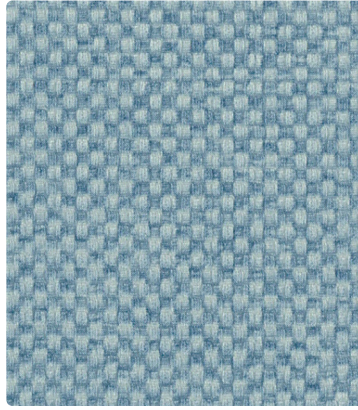
Additional colors are available. Please refer to the Mayer website.

MATKA



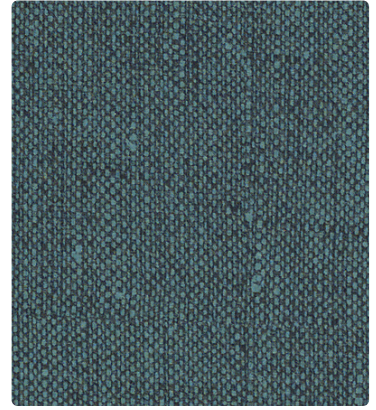
MT-024
Seafoam

MODE



MO-004
Chambray

KEY LARGO



KL-014
Aegean



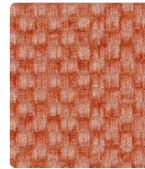
MT-002
Chamois



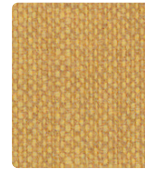
MT-009
Harvest



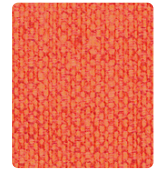
MO-002
Straw



MO-011
Paprika



KL-012
Wheat



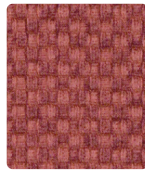
KL-009
Tangerine



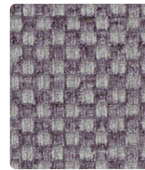
MT-001
Cherry



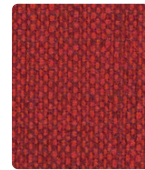
MT-011
Wine



MO-001
Persimmon



MO-005
Orchid



KL-001
Crimson



KL-015
Crocus



MT-014
Cerulean



MT-004
Lapis



MO-024
Denim



MO-034
Ink



KL-024
Nassau



KL-004
Ultramarine



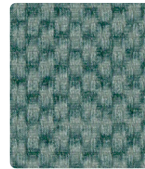
MT-013
Spring



MT-003
Clover



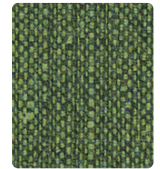
MO-003
Celery



MO-013
Jade



KL-033
Pear



KL-003
Jungle



MT-020
Burnish



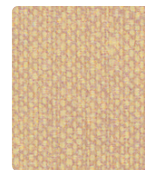
MT-000
Shiitake



MO-016
Silver



MO-000
Burlap



KL-027
Sand



KL-020
Sandstone



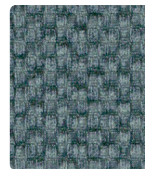
MT-036
Titanium



MT-016
Shadow



MO-006
Pewter



MO-044
Spruce



KL-026
Quarry



KL-006
Graphite

Additional colors are available. Please refer to the Mayer website.

TECHNICAL INFORMATION

Vinyl Coordinates

Pattern 54"	Content and Backing	Certifications	Weight/ Linear Yd.	Pattern Repeat	Finish	Abrasion Wyzenbeek	Light-Fastness	Flammability	Cleaning Code
ETCH <i>Directional</i>	78% Vinyl - Phthalate Free face, 22% Polyester backing	GREENGUARD	30 oz.	None	Soil and Stain Resistant Top Coat with Ink Resistant Technology	100,000 Double Rubs	300 hours	Cal. 117-2013 NFPA 260/UFAC	BC, CFC
FLORENTINO	85% Vinyl - Phthalate Free face, 15% Polyester backing	GREENGUARD	28 oz.	None	Soil and Stain Resistant Top Coat with Ink Resistant Technology	651,000 [^] Double Rubs	650 hours	Cal. 117-2013 NFPA 260/UFAC	BC, CFC
KEY LARGO <i>Directional</i>	85% Vinyl - Phthalate Free face, 15% Polyester backing	GREENGUARD	28 oz.	None	Soil and Stain Resistant Top Coat with Ink Resistant Technology	250,000 [^] Double Rubs	650 hours	Cal. 117-2013 NFPA 260/UFAC	BC, CFC
MATKA <i>Directional</i>	80% Vinyl - Phthalate Free face, 20% Polyester backing	GREENGUARD	30 oz.	Non-Matching	Soil and Stain Resistant Top Coat with Ink Resistant Technology	250,000 [^] Double Rubs	500 hours	Cal. 117-2013 NFPA 260/UFAC	WS, BC, CFC
MINGLE <i>Directional</i>	85% Vinyl - Phthalate Free face, 20% Polyester backing	GREENGUARD	30 oz.	None	Soil and Stain Resistant Top Coat with Ink Resistant Technology	250,000 [^] Double Rubs	300 hours	Cal. 117-2013 NFPA 260/UFAC	WS, BC, CFC
MODE <i>Directional</i>	81% Vinyl - Phthalate Free face, 19% Polyester backing	GREENGUARD	30 oz.	Non-Matching	Soil and Stain Resistant Top Coat	100,000 Double Rubs	1000 hours	Cal. 117-2013 NFPA 260/UFAC	BC, CFC

REDUCED ENVIRONMENTAL IMPACT

These products are GREENGUARD Certified for low chemical and particle emissions to UL standard UL 2818 and may contribute to LEED certification. For complete information visit mayerfabrics.com and UL.com/gg.

Etch

Phthalate Free (includes all Phthalates listed in CAL Prop 65 & CPSIA) Lead Free BPA Free/TRIS Free/Formaldehyde Free
Does not contain Conflict Minerals SB1019 Compliant - Does not contain added Flame Retardant Chemicals
Does not contain any added Anti-Microbial or Anti-Bacterial Chemicals

Florentino, Key Largo

This product does not pose any exposure risks associated with the chemicals in Prop 65 No Added Flame Retardant Chemicals
No Added Anti-Microbial/Anti-Bacterial Chemicals Phthalate Free Lead Free BPA Free/TRIS Free/Formaldehyde Free Does Not Contain Conflict Minerals

Matka

Phthalate Free, including all phthalates listed in Cal Prop 65 & CPSIA Lead Free BPA Free/TRIS Free/Formaldehyde Free
Does Not Contain Conflict Minerals Free from FR, antimicrobials, and antibacterials

Mingle

No flame-retardant additives No Anti-Microbial/Anti-Bacterial Chemicals Phthalate Free Lead Free BPA Free/TRIS Free/Formaldehyde Free
Does Not Contain Conflict Minerals

Mode

Prop 65 Compliant Phthalate Free Biocide Free No Fire Retardants No Heavy Metals Formaldehyde Free

CARE AND CLEANING INFORMATION

WS: Water/Solvent Cleaner

BC: Bleach Cleanable – 1 part bleach, 9 parts water = 10% bleach, 90% water solution. Do not clean/disinfect fabric for longer than 10 minutes using the 10% bleach solution. Always rinse promptly with clean water after applying the bleach solution. Failure to do so will void any and all warranties.

CFC: Coated Fabrics Cleaning – Refer to Mayer website for complete cleaning info.

DYE TRANSFER DISCLAIMER

Certain clothing and accessory dyes (such as those used on denim jeans) may migrate to lighter colors. This phenomenon is increased by humidity and temperature and is irreversible. Mayer Fabrics will not assume responsibility for dye transfer caused by external contaminants. Please check compatibility when using this product in combination with painted or varnished surfaces.

ADDITIONAL INFORMATION

CAL TB 133: All patterns may comply with California Technical Bulletin 133 when combined with appropriate components.

[^]Abrasion: Multiple factors affect fabric durability and appearance retention, including end-user application and proper maintenance. Wyzenbeek results above 100,000 double rubs have not been shown to be a reliable indicator of increased fabric lifespan.

Custom Capabilities: All patterns can be custom colored. Minimum yardage applies.

Digital Swatch Card Color Matching: Due to color variations on different monitors and color printers, actual swatch colors may vary slightly. Please request a memo sample from Mayer Fabrics to ensure proper color representation.

Specifications: Specifications are correct at the time of printing. Additional specifications are available on our website.



These fabrics meet or exceed these ACT performance guidelines.
Certification Marks owned by ACT



TexTile3D™
by Mayer Fabrics

For additional colors, pre-approved patterns, grade-ins, samples and specifications, please refer to the Mayer TexTile3D link.



MAYERFABRICS