

# SUSTAINABLE PERFORMANCE

## CRYPTON® COLOR CARD

### CRYPTON® COLOR CARD

| Pattern - width                   | Fiber content                                       | Finish         | Abrasion            | Lightfastness         | Approx. repeat | Cleaning code   |
|-----------------------------------|---|----------------|---------------------|-----------------------|----------------|-----------------|
| Cover Cloth - 59"<br>🔥 ▲ ☀️ 🍃 ☆ * | 56% Post consumer recycled polyester; 44% polyester | Crypton Green® | 200,000 double rubs | Class 4<br>40 hours   |                | W<br>BC (10:1)  |
| Faux Felt - 56"<br>🔥 ▲ ☀️ 🍃 ☆ *   | 62% Post consumer recycled polyester; 38% polyester | Crypton Green® | 75,000 double rubs  | Class 4.5<br>40 hours |                | WS<br>BC (10:1) |
| Faux Mo - 55"<br>🔥 ▲ ☀️ 🍃 ☆ *     | 58% Post consumer recycled polyester; 42% polyester | Crypton Green® | 200,000 double rubs | Class 4<br>40 hours   |                | WS<br>BC (10:1) |
| Flock - 56"<br>🔥 ▲ ☀️ 🍃 ☆ *       | 53% Recycled polyester; 47% polyester               | Crypton Green® | 140,000 double rubs | Class 4.5<br>40 hours |                | W<br>BC (10:1)  |
| Hobnob - 56"<br>🔥 ▲ ☀️ 🍃 ☆ *      | 51% Recycled polyester; 49% polyester               | Crypton Green® | 87,000 double rubs  | Class 5<br>40 hours   |                | W<br>BC (10:1)  |
| Kit - 54"<br>🔥 ▲ ☀️ 🍃 ☆ *         | 57% Recycled polyester; 43% polyester               | Crypton Green® | 200,000 double rubs | Class 4.5<br>40 hours |                | W<br>BC (10:1)  |
| Solitaire - 57"<br>🔥 ▲ ☀️ 🍃 ☆ *   | 50% Post consumer recycled polyester; 50% polyester | Crypton Green® | 200,000 double rubs | Class 4<br>40 hours   | 1/8" L, 1/8" W | W<br>BC (10:1)  |
| Sport - 56"<br>🔥 ▲ ☀️ 🍃 ☆ *       | 98% Post consumer recycled polyester; 2% polyester  | Crypton Green® | 100,000 double rubs | Class 4.5<br>40 hours |                | W<br>BC (10:1)  |
| Synergy - 53"<br>🔥 ▲ ☀️ 🍃 ☆ *     | 71% Post consumer recycled polyester; 29% polyester | Crypton Green® | 165,000 double rubs | Class 4<br>40 hours   |                | W<br>BC (10:1)  |
| Oath - 55"<br>🔥 ▲ ☀️ 🍃 ☆ *        | 50% Post consumer recycled polyester; 50% polyester | Crypton Green® | 204,000 double rubs | Class 5<br>40 hours   |                | W<br>BC (10:1)  |
| Keynote - 54"<br>🔥 ▲ ☀️ 🍃 ☆ *     | 100% Post consumer recycled polyester               | Crypton Green® | 100,000 double rubs | Class 4<br>40 hours   |                | W<br>BC (10:1)  |

\* ACT® Registered Certification Marks  
These fabrics when used with proper components are compatible with California Technical Bulletin 133

Crypton Green® Color Card fabrics are made with the highest performing most sustainable yarns and the highest performing fabric finish. 10 year warranty.



GREENGUARD certified. CA Section 01350 compliant  
Eligible for CHPS Low-Emitting Material Credits

©2019



08993327

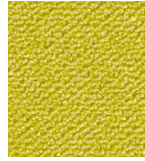
- Grade 3:** Cover Cloth
- Grade 4:** Faux Felt, Flock, Hobnob, Keynote, Solitaire
- Grade 5:** Kit, Sport, Synergy
- Grade 6:** Faux Mo, Oath

Pricing as of 1/1/2024. Please visit [rtlondon.com](http://rtlondon.com) to confirm pricing

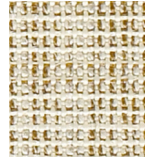




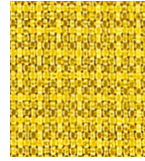
SOLITAIRE PUMICE



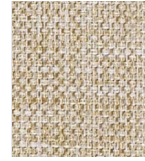
FAUX MO LIMON



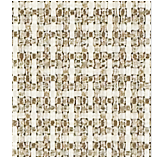
HOBNOB GINGER



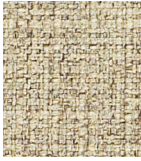
SOLITAIRE AZTEC



COVER CLOTH OAT



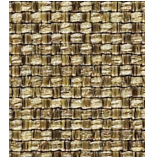
SOLITAIRE DOVE



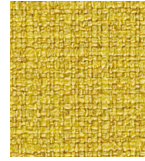
FLOCK TWINE



SPORT DAYGLOW



KIT EARTH



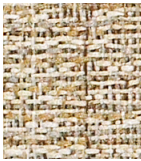
FLOCK HARP



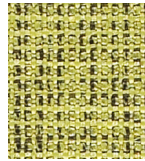
FAUX FELT PEBBLE



COVER CLOTH PLATINUM



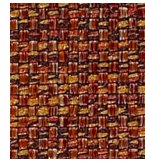
KEYNOTE CHAI



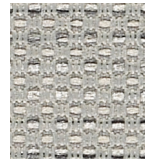
HOBNOB SMITH



FLOCK AMBER



KIT FIESTA



SPORT PEWTER



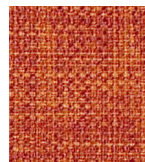
HOBNOB ASH



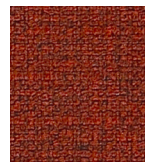
FAUX MO STONE



SPORT APPLE



COVER CLOTH ZEST



FLOCK PAPRIKA



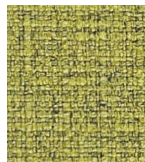
FAUX FELT STONE



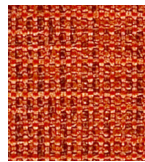
FAUX FELT GRAPHITE



HOBNOB ZEBRA



FLOCK FERN



HOBNOB TANGELO



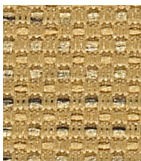
SOLITAIRE JUBILEE



COVER CLOTH VESSEL



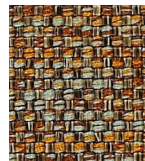
SOLITAIRE GRIFFIN



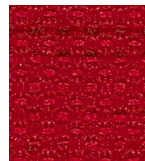
SPORT FLAX



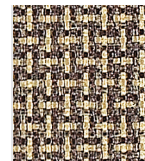
COVER CLOTH SORREL



KIT MOONSTONE



SPORT ALARM



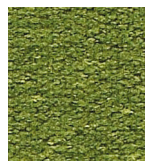
SOLITAIRE TOBACCO



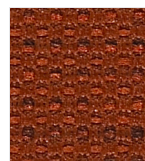
FLOCK FLINT



SOLITAIRE FLAX



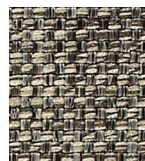
FAUX FELT SPROUT



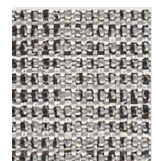
SPORT BRICK



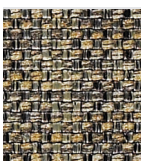
FAUX FELT VIBRANT



KIT PEBBLE



HOBNOB SHALE



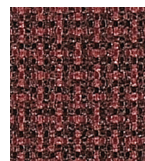
KIT QUARTZ



FAUX MO PINE



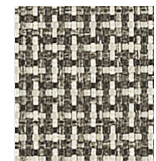
FAUX FELT CORAL



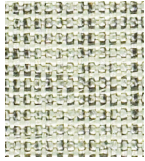
SOLITAIRE CURRANT



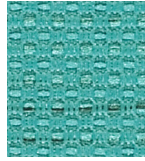
FAUX MO PATH



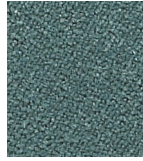
SOLITAIRE GALENA



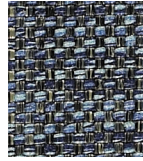
HOBNOB DEW



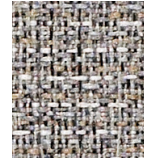
SPORT TURQUOISE



FAUX MO SPA



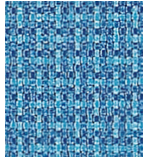
KIT BLAZER



KEYNOTE GRANITE



SOLITAIRE TINSEL



SOLITAIRE CYAN



FAUX MO SKY



KIT PARADISE



FAUX FELT LAGOON



FLOCK NICKEL



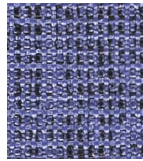
SYNERGY BEDROCK



COVER CLOTH CYAN



SYNERGY AEGEAN



HOBNOB IRIS



COVER CLOTH  
VESPER



FAUX FELT  
FLANNEL



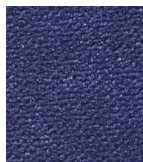
HOBNOB CARBON



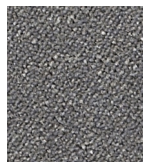
FLOCK CAYMEN



FLOCK DUSK



FAUX MO LAPIS



FAUX MO DELTA



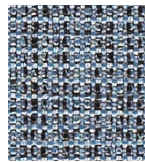
COVER CLOTH  
GRAPHITE



SYNERGY CARBON



FAUX FELT POOL



HOBNOB BAY



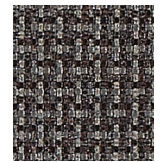
KIT PACIFIC



FAUX FELT QUAIL



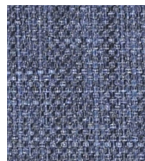
FAUX FELT  
CHARCOAL



SOLITAIRE  
GRAPHITE



SPORT CADET



COVER CLOTH  
DELFT



SPORT COBALT



KIT AQUA



OATH CHARCOAL



SPORT ONYX



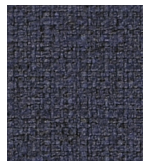
FAUX MO MARINE



SOLITAIRE CADET



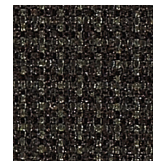
OATH AZURE



FLOCK BALTIC



FAUX MO SHALE



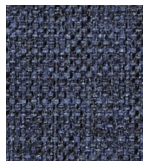
SOLITAIRE ONYX



SYNERGY DENIM



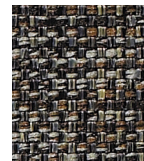
FAUX MO SAPPHIRE



COVER CLOTH  
INDIGO



SOLITAIRE  
MIDNIGHT



KIT EBONY



COVER CLOTH JET

# SUSTAINABLE PERFORMANCE

## CRYPTON® COLOR CARD

### CRYPTON® COLOR CARD

| Pattern - width                   | Fiber content                                       | Finish         | Abrasion            | Lightfastness         | Approx. repeat | Cleaning code   |
|-----------------------------------|---|----------------|---------------------|-----------------------|----------------|-----------------|
| Cover Cloth - 59"<br>☛ ▲ ☀️ 🍃 ☆ * | 56% Post consumer recycled polyester; 44% polyester | Crypton Green® | 200,000 double rubs | Class 4<br>40 hours   |                | W<br>BC (10:1)  |
| Faux Felt - 56"<br>☛ ▲ ☀️ 🍃 ☆ *   | 62% Post consumer recycled polyester; 38% polyester | Crypton Green® | 75,000 double rubs  | Class 4.5<br>40 hours |                | WS<br>BC (10:1) |
| Faux Mo - 55"<br>☛ ▲ ☀️ 🍃 ☆ *     | 58% Post consumer recycled polyester; 42% polyester | Crypton Green® | 200,000 double rubs | Class 4<br>40 hours   |                | WS<br>BC (10:1) |
| Flock - 56"<br>☛ ▲ ☀️ 🍃 ☆ *       | 53% Recycled polyester; 47% polyester               | Crypton Green® | 140,000 double rubs | Class 4.5<br>40 hours |                | W<br>BC (10:1)  |
| Hobnob - 56"<br>☛ ▲ ☀️ 🍃 ☆ *      | 51% Recycled polyester; 49% polyester               | Crypton Green® | 87,000 double rubs  | Class 5<br>40 hours   |                | W<br>BC (10:1)  |
| Kit - 54"<br>☛ ▲ ☀️ 🍃 ☆ *         | 57% Recycled polyester; 43% polyester               | Crypton Green® | 200,000 double rubs | Class 4.5<br>40 hours |                | W<br>BC (10:1)  |
| Solitaire - 57"<br>☛ ▲ ☀️ 🍃 ☆ *   | 50% Post consumer recycled polyester; 50% polyester | Crypton Green® | 200,000 double rubs | Class 4<br>40 hours   | 1/8" L, 1/8" W | W<br>BC (10:1)  |
| Sport - 56"<br>☛ ▲ ☀️ 🍃 ☆ *       | 98% Post consumer recycled polyester; 2% polyester  | Crypton Green® | 100,000 double rubs | Class 4.5<br>40 hours |                | W<br>BC (10:1)  |
| Synergy - 53"<br>☛ ▲ ☀️ 🍃 ☆ *     | 71% Post consumer recycled polyester; 29% polyester | Crypton Green® | 165,000 double rubs | Class 4<br>40 hours   |                | W<br>BC (10:1)  |
| Oath - 55"<br>☛ ▲ ☀️ 🍃 ☆ *        | 50% Post consumer recycled polyester; 50% polyester | Crypton Green® | 204,000 double rubs | Class 5<br>40 hours   |                | W<br>BC (10:1)  |
| Keynote - 54"<br>☛ ▲ ☀️ 🍃 ☆ *     | 100% Post consumer recycled polyester               | Crypton Green® | 100,000 double rubs | Class 4<br>40 hours   |                | W<br>BC (10:1)  |

\* ACT® Registered Certification Marks  
These fabrics when used with proper components are compatible with California Technical Bulletin 133

Crypton Green® Color Card fabrics are made with the highest performing most sustainable yarns and the highest performing fabric finish. 10 year warranty.



GREENGUARD certified. CA Section 01350 compliant  
Eligible for CHPS Low-Emitting Material Credits

©2019



08993327

Job: 7080 Date: 11/05/20 v.1 ja  
Cover  
Note: Colors on this proof do not represent actual color.  
■ = Warm Grey 7 + Satin LeedGuard  
■ = Warm Grey 7 - 10% (Sustainable Performance)  
OK'd by:  
Date:  
This proof must be OK'd by our customer's authorized agent. Production cannot be started until it is returned. Final responsibility for copy, spelling, grammar, placement, punctuation, etc. will rest on you, the customer. Changes at this point may result in extra charges. Please mark any changes clearly on this proof.  
All proofs remain the property of: Leed Setting Tools Corp.

