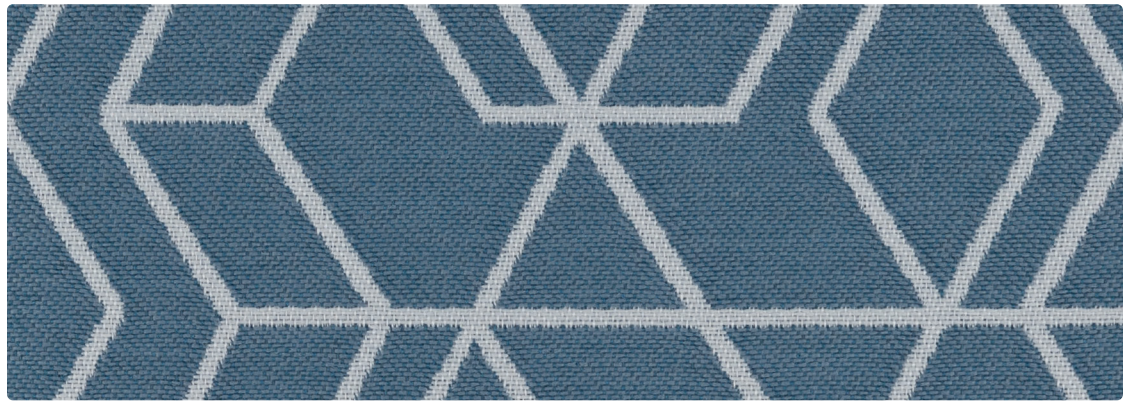


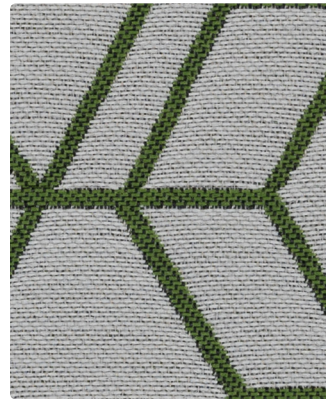
DENALI



334-014
Water



334-016
Snow



334-003
Forest



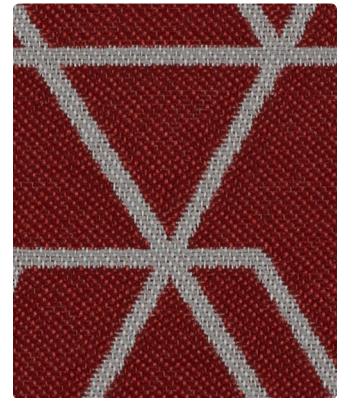
334-009
Clementine



334-007
Bone



334-004
Regal Blue



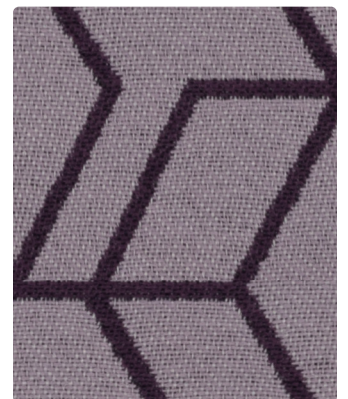
334-001
Crimson



334-006
Night



334-024
Ink



334-005
Thistle

Upholstery
100% Post-Consumer Recycled Polyester (52% from SEAQUAL® YARN)
54 inches / 137 cm
Exceeds 100,000 Double Rubs
Stain Repellent - PFAS Free
GREENGUARD Gold Certified

DENALI

TECHNICAL INFORMATION

Application: Upholstery

Content: 100% Post-Consumer Recycled Polyester
(52% from SEAQUAL® YARN)

Backing: Acrylic

Weight: 12.35 oz./linear yard / 382.89 g/lm

Width: 54 inches / 137 cm

Finish: Stain Repellent - PFAS Free

Approx. Repeat: 7.1875 in/18.26 cm H, 5.25 in/13.34 cm V

Directional: Yes

Shown Railroaded: No

PERFORMANCE

Abrasion: Exceeds 100,000 Double Rubs
(Wyzenbeek/Cotton Duck)

Abrasion test results exceeding ACT Performance Guidelines are not an indicator of product lifespan. Multiple factors affect durability and appearance retention.

Crocking: Dry: Grade 4 min / Wet: Grade 3 min

Colorfastness to Light: Grade 4 min at 40 hours

FLAMMABILITY

California Technical Bulletin 117-2013
NFPA 260/UFAC Class 1

REDUCED ENVIRONMENTAL IMPACT

This product is GREENGUARD Gold Certified for low chemical and particle emissions to UL standard UL 2818 and may contribute to LEED certification. For complete information visit mayerfabrics.com.

No FR Additives No Antimicrobial/Antibacterial Additives PFAS Free

CLEANING INFORMATION

W/S: Water/Solvent Cleaner

BC: Bleach Cleanable -

1 part bleach, 9 parts water = 10% bleach, 90% water solution.

DYE TRANSFER DISCLAIMER

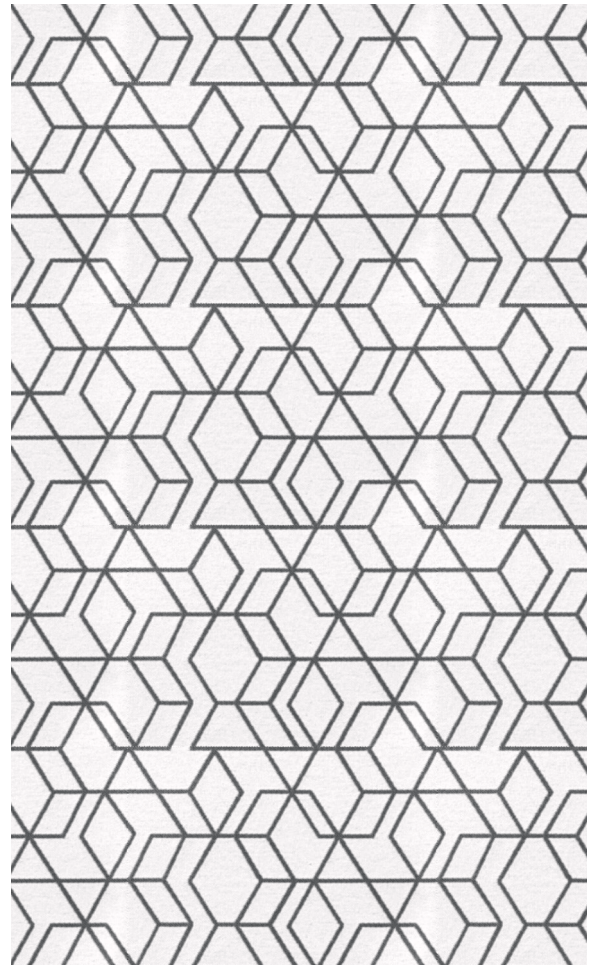
Certain clothing and accessory dyes (such as those used on denim jeans) may migrate to lighter colors. This phenomenon is increased by humidity and temperature and is irreversible. Mayer Fabrics will not assume responsibility for dye transfer caused by external contaminants. Please check compatibility when using this product in combination with painted or varnished surfaces.

ADDITIONAL INFORMATION

Custom Colors: All patterns can be custom colored. Minimum yardage applies. Warranty: Please refer to the Mayer website for warranty information by pattern.

Digital Swatch Card Color Matching: Due to color variations on different monitors and color printers, actual swatch colors may vary slightly. Please request a memo sample from Mayer Fabrics to ensure proper color representation.

Complete and current product information available at mayerfabrics.com.



SEAQUAL INITIATIVE



MAYER FABRICS



334CD ©2024 50324

T 800.428.4415 mayerfabrics.com
500 S. Kitley Ave. Indianapolis, IN 46219