

Durability at its finest. Tough enough to withstand years of commercial use and abuse. Bases and support columns are structural grade steel.

## Fulton

Tables



## Fulton



### features

- Laminate top with 3mm matching PVC edgeband.
- Aluminum one-piece die cast column base available in standard powdercoat finishes.
- Adjustable leveling glides on base.
- Square, round & rectangular table shapes available.
- Available in 30", 36" 42" and 48" sizes.
- Available in 42" Pub Height.
- C-leg, flip-top with castors available in 42", 48", 60" rectangle sizes

### statement of line



Round



Square



Rectangular

### laminate finish



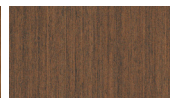
Oak



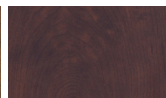
Natural Maple



Medium Oak



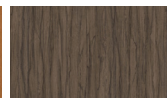
Chestnut Maple



Cocoa Maple



Cinnamon Noche Maple



Driftwood Maple



Maduro Maple



Slate



Linen

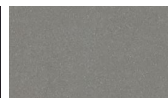
### metal finish



Black Wrinkle



Gloss Black



Silver



Soft White

### Color Disclaimer

Please order actual material samples for specifying purposes. Color accuracy is not guaranteed with these images.