

Ridgecrest



Putty



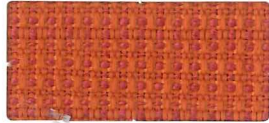
Beach



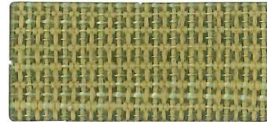
Tide Pool



Sterling



Bittersweet



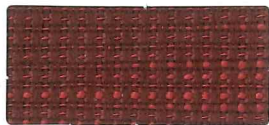
Meadow



Mink



Chocolate



Ruby



Midnight



Ink

Montgomery



Mushroom



Red Pepper



Lime



Sterling



Melon



Bermuda



Iron



Cocoa



Grape



Midnight



Black

Kedar



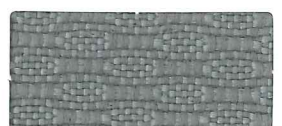
Taupe



Poppy



Espresso



Light Grey



Burgundy



Indigo



Iron

Fabric Specifications and Technical Data

	Kedar	Montgomery	Ridgecrest
Content;	100% Polyester	100% Polyester	100% Polyester
Backing;	Synthetic latex blend	Synthetic latex blend	Synthetic latex blend
Width;	54"	54"	54"
Weight;	15.6 ozs.	10.72 ozs.	12.96 ozs.
Abrasion;	60,000	100,000	100,000
Flammability;	CA 117-2013	CA 117-2013	CA 117-2013
Passes;	UFAC Class I NFPA 260 Class I	UFAC Class I NFPA 260 Class I	UFAC Class I NFPA 260 Class I
Lightfastness;	Class 4/ 40 Hours	Class 4/ 40 Hours	Class 4/ 40 Hours
Colorfastness;	Wet: Class 3 Dry: Class 4	Wet: Class 4 Dry: Class 4	Wet: Class 4 Dry: Class 5
Pilling Resistance;	Class 4	Class 4	Class 4
Breaking Strength;	Warp: 80 lbs. Weft: 74 lbs.	Warp: 75 lbs. Weft: 69 lbs.	Warp: 80 lbs. Weft: 68 lbs.
Seam Slippage;	Warp: 86 lbs. Weft: 74 lbs.	Warp: 35 lbs. Weft: 35 lbs.	Warp: 84 lbs. Weft: 72 lbs.
Cleaning Code;	W	W	W
Country of Origin;	Columbia, SA	China	USA

For samples or further information, please contact::

Culp, Inc.

Contract Fabrics

1823 Eastchester Drive

High Point, NC 27265

Phone: (336)-889-5161

Fax: (336)-889-7848

www.culpcontract.com

CULP
CONTRACT

2-5-2015