

Ample rounded frames and distinctive
back designs distinguish Artisan II.

Artisan II

Chairs



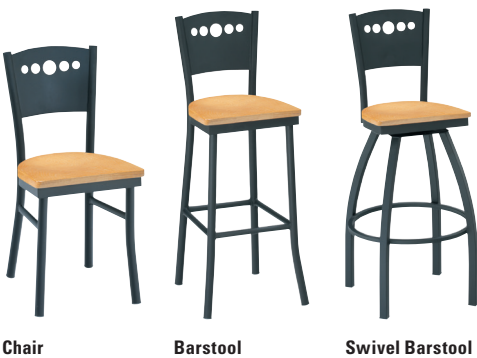
Artisan II



features

- Side chair, barstool and swivel barstool models available.
- Metal or wood back. Standard cutouts available or customized.
- Upholstered or wood seat.
- Premium nylon glides.
- Steel frame chair available in a variety of standard powder coat finishes.

statement of line



Chair

Barstool

Swivel Barstool



5 Hole

Cappuccino

Dot

Matrix

Solid

Standard cutout designs. Custom cutouts available.

wood finish



Oak

Natural Maple

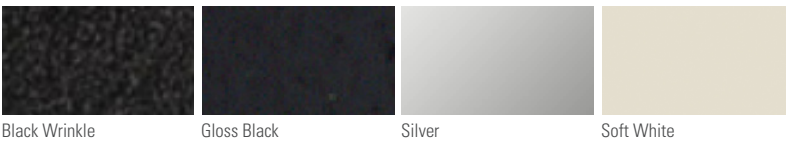
Medium Oak

Chestnut Maple

Cocoa Maple

Cinnamon Noche Maple

metal finish



Black Wrinkle

Gloss Black

Silver

Soft White

Color Disclaimer

Please order actual material samples for specifying purposes. Color accuracy is not guaranteed with these images.